



**Financial Reports for 2025¹ and
Approved Budgets for 2026**

2025 Financial Report - Top Level Summary - - - - - 1

2025 Account Summaries and 2026 approved budgets - - - - - 2

2025 Detailed Report and 2026 approved budget - - - - - 3-5

Account Definitions - - - - - 6-8

Investment Activity for 2025 - - - - - 9

Cash Balances and designated funds as of December 31st, 2025 - - - - - 10

Assets and Liabilities - - - - - 11

Pastors' salaries computation - - - - - 12

Site Plan - - - - - 13

Contribution History Graph - - - - - 14

Contribution Increase / Decrease (yearly) Graph- - - - - 15

Monthly Contributions Graph 2025 - - - - - 16

Distribution of 2026 proposed budgeted Income - - - - - 17

--- January 11, 2026 ---

1. The reports contained in this document are not SGBC's verified corporate financial reports. The verified reports are prepared by Geoffrey Wolfe Accounting Services and available upon request. These reports have been prepared for presentation purposes only.

SGBC 2025 FINANCIAL REPORT

INCOME			EXPENSES		
Budgeted Income	Actual Income	Over / (Under)	Budgeted Expenses	Actual Expenses	Over / (Under)
\$597,834	\$625,007	\$27,173	\$604,334	\$598,337	(\$5,997)

Actual income was	4.55%	above budgeted income	\$27,173
Actual expenses were	-1.00%	below budgeted expenses	(\$5,997)
Net income was	4.46%	Above actual expenses	(\$26,670)

2026 Approved Budget

Income		
	2026 Budget	Budget change
Offerings (non-designated)	\$ 439,680	\$ 14,846
Eastside property rental	\$ 156,044	\$ 4,544
Investment	\$ 9,000	\$ 4,000
Other	\$ 16,500	\$ -
Income Totals:	\$ 621,224	\$ 23,390
Expenses		
	2026 Budget	Budget change
West side Facility (facility improvement, maintenance, equipment, utilities, communications, insurance.)	\$ 93,031	\$ (4,970)
East side property (contract, maintenance)	\$ 5,500	\$ 1,000
Administration (office supplies, misc.)	\$ 5,800	\$ 1,350
Personnel (Pastor Dan and Nathan salaries & benefits, Admin Assistant, accountant, landscaper, custodian, ministry support)	\$ 239,650	\$ 16,174
Missions & Ministries (Alpha & Omega, Alliance Defending freedom, Leightons, radio broadcast, choices pregnancy center, neighbor hood clinic, ADF, Skills training, Church of Redeemer)	\$ 241,493	\$ (5,596)
Christian Education & Ministries (Bible conf., SS & CE, Benevolence, Care & fellowship, Ladies fellowship, Mens fellowship, Youth, college and career)	\$ 31,000	\$ 8,750
Distribution of messages and written material (website, sermonaudio, AV systems)	\$ 4,750	\$ 182
Expense Totals:	\$ 621,224	\$ 16,890

2026 Approved Budget

QB #	DESCRIPTION	2026 Budget	Chg from 2025 Bud	Note
Income				
4100	Offerings	\$ 439,680	\$ 14,846	1
7100	East property rent	\$ 156,044	\$ 4,544	1a
7120	Investment income	\$ 9,000	\$ 4,000	2
4500	A&O,AIT, CHSRC	\$ 16,500	\$ -	3
	Totals:	\$ 621,224	\$ 23,390	
Expenses				
West side facility		26 Budget	Frm bdgt	
6100	Facil. improvement (major)	\$ 23,200	\$ (1,800)	4
6109	CHSRC Rent Credit	\$ -	\$ (9,600)	
6110	Equipment	\$ 6,000	\$ -	
6120	Utilities	\$ 26,100	\$ 2,500	5
6130	Communication services	\$ 3,200	\$ 200	6
6140	Resource Ctr Maintenance	\$ 500	\$ 500	7
6150	Insurance (facility, liability)	\$ 20,531	\$ 230	7
6160	Maintenance (bldgs & facilities)	\$ 13,500	\$ 3,000	
East side property		26 Budget	Frm bdgt	
7410	Contract management exp	\$ 3,000	\$ 1,000	
7420	East property facility exp	\$ 2,500	\$ -	8
Administration		26 Budget	Frm bdgt	
6210	Office supplies	\$ 4,700	\$ 900	
6230	Miscellaneous	\$ 1,100	\$ 450	
Personnel		26 Budget	Frm bdgt	
6310	Pastor 1 base salary	\$ 64,395	\$ 8,605	9
6330	Pastor 1 Housing	\$ 12,000	\$ -	
6340	Pastor 1 Retirement	\$ 2,000	\$ -	
6325	Worker's Comp. Ins.	\$ 1,300	\$ 26	
6360	Pastor 1 ministry expense	\$ 2,000	\$ (500)	
6365	Pastor 1 gasoline exp	\$ 900	\$ -	
6320	Pastor 1 payroll taxes	\$ 4,926	\$ 658	
7460	Pastor 2 base salary	\$ 74,140	\$ 1,621	9a
7461	Pastor 2 Housing allow.	\$ 20,400	\$ -	
7462	Pastor 2 Retirement	\$ 2,000	\$ -	
7467	Pastor 2 Gas allowance	\$ 1,000	\$ 100	
7468	Pastor 2 ministry expense	\$ 2,000	\$ (500)	
7490	Administration Assistant	\$ 10,998	\$ 524	9b
7495	Admin. Assistant payroll taxes	\$ 841	\$ 40	
6560	Payroll Services	\$ 50	\$ -	
6400	Custodial services	\$ 16,000	\$ 4,000	10

QB #	DESCRIPTION	2026 Budget	Chg from 2025 Bud	Note
6405	Custodial supplies	\$ 1,700	\$ 600	
6410	Landscaping services	\$ 13,000	\$ -	11
6390	Accounting Services	\$ 8,000	\$ 1,000	12
6380	Ministry support	\$ 2,000	\$ -	
Missions & Ministries		26 Budget	Frm bdgt	
6610	Alpha Omega	\$ 10,000	\$ -	
6621	Church of the Redeemer	\$ 7,000	\$ 7,000	12a
6622	Alliance Defending Freedom	\$ 20,000	\$ -	
6624	ADF Church Alliance - legal	\$ 500	\$ -	
6625	Choices Pregnancy Center	\$ 7,000	\$ 2,000	
6627	Neighborhood Clinic	\$ 5,000	\$ -	12b
6629	Skills Training Program	\$ 8,000	\$ 500	
6635	Leighton's	\$ 54,800	\$ 3,000	
6645	Furlough expenes 2024	\$ 5,000	\$ 5,000	
6643	Future ministry	\$ 115,193	\$ (23,308)	13
7512	1360 AM radio program	\$ 9,000	\$ 212	
Christian ed. & ministries		26 Budget	Frm bdgt	
6720	Sunday Sch/Christian Ed	\$ 1,500	\$ 500	
6730	Benevolence fund	\$ 8,000	\$ -	
6740	Care and fellowship	\$ 14,500	\$ 6,000	
6745	Ladies Fellowship	\$ 1,000	\$ -	
6750	Men's Fellowship	\$ 1,000	\$ 750	
6760	Youth / teen ministry	\$ 1,500	\$ -	
6765	College & Career	\$ 3,500	\$ 1,500	
New Media Presence		26 Budget	Frm bdgt	
7450	AV Equipment & Service	\$ 3,500	\$ -	
7452	Sermon Audio	\$ 750	\$ 31	
7453	Website	\$ 500	\$ 151	14
	Totals:	\$ 621,224	\$ 16,890	
		\$0		

1	Offering income does not include Designated Gifts. There
1a	An August invoice was not paid - this is being researched.
2	See investment sheet. Income includes dividends and interest earned. Income does not include change in value. If change in value is added to dividends and interest then investment
3	Includes Alpha & Omega rent (\$6,550), AIT storage space rent (\$200), CSUBC rent (0.600)
4	2026 items are: Repair eaves on little house - 3000. \$2,000 for sinks and countertops (assuming volunteer instal). \$12,000 for
5	Utilities include: City of Phoenix water, SRP electric, SW Gas, ADT alarm, SRP irrigation, and Republic Services waste (A&O
6	Communications include: Landline phone (to church facility), Pastor Dan's & Nathaniel's cell phones, wireless internet
7	This includes liability and property coverage for west side faculty. The east side buildings are covered by a separate policy at Victory Autism Academy expense. There was a significant increase for 2025 along with the lessening of
8	SGBC is responsible for underground plumbing (not landscaping) and structural building failure. All other
9	The increase covers increase health insurance costs and covering 100% of cost of insurance. See the pastor's salary
9a	The increase in salary is a 3% cost of living increase. The 7,700 overrun for 2025 is due to the fact that during 2024 and part of 2023 SGBC did not cover insurance costs from Mabel's employer. This cost was retroactively paid in 2025. SGBC
9b	The increase is 5%.
10	This is a contract with
11	This is a contract with Big Kahuna Construction &
12	This is a contract with Wolfe Accounting & Bookkeeping
12a	This is a new annual ministry approved at June 1, 2025
12b	SGBC has twice made one time support donations to the clinic. We are proposing to switch our support to the
13	These funds are being saved for future ministry efforts, to be determined in the future. Designated account 3844.
14	The actual cost for the website was 349 paid to Give WP for credit card processing SW. The additional 324X4 is for donation hours by Integrated Technologies. Due to accounting rules the donated labor had to be considered as a cost

Account Definitions

These definitions are not intended to be exhaustive but to serve as examples to help determine where particular costs should be charged.

Act.	Item	Definition
Income		
4100	Offerings	Contributions (non designated) made to SGBC.
7110& 7120	Investment Income	Income generated from interest and dividends.
4500	Other	Income generated from misc. sources, sale of assets, etc.
Facility Expense		
6100	Facility Improvement (major)	Major projects for the year. Remodel rooms, new roofs, New A/C units, pave parking lots, etc.
6108	Facility Improvement to launch skills training program	Remodel little house into shop. This budget item should end after 2026. Maintenance will be covered under 6160
6110	Equipment purchase	Office equipment, landscaping equipment, janitorial equipment, kitchen equipment, furniture, tools. AV equipment is not included here, but on account 7450. AV equipment is not included here, but on account 7450.
6120	Utilities	Electric, SW gas, City of Phx. Water, SRP irrigation, trash removal, security alarm service.
6130	Communication services	Telephone services, landline and cell phones, internet. <i>Note: wiring maintenance is not charged to this category but should be charged to Maintenance.</i>
6150	Insurance	SGBC property and liability insurance
6160	Maintenance (buildings & facilities)	Paint, repairs to buildings, wiring, plumbing, telephone wiring, sprinklers, minor roof repairs, carpet cleaning, work day materials, pest control services, A/C service and repairs, piano service and repair. Work day food. Weed and trash removal if beyond normal landscaping services contract. Tree pruning which is not part of the landscaping contract is charged here.
East Property Expenses		
7410	Contract management expense	Expenses associated with managing the lease contract, legal consults, realtor consults, etc.
7420	East property facility expenses	We are responsible for underground plumbing repairs and any structural building failure.
Administration Expense		
6210	Office Supplies	Paper, postage, copier cartridges, printer cartridges, calendars etc. Offering envelopes, pens, file folders, printing costs not related to a specific event.
6230	Miscellaneous	Items that cannot fit into any other category. Use as a last resort. Include the music copyright fees here.
Personnel Expense		
6310	Pastor 1 Salary (gross)	Gross salary before taxes
6330	Pastor 1 housing allowance	Pastor's housing allowance
6320	Pastor 1 Matching payroll taxes	The matching portion of Social Security and Medicare that SGBC must pay if the pastor is enrolled in these federal programs.
6325	Workers comp insurance	Workers compensation insurance for all employees.
6340	Pastor 1 Retirement Fund	Funds provided for pastor's retirement

Act.	Item	Definition
6350	Pastor 1 Health Insurance	Cost to cover pastor's health insurance
6365	Pastor 1 Gasoline Expense	Cost of gas for pastor local travel, or travel to conferences
6360	Pastor 1 Ministry Expense	Reimbursement of pastoral ministry expenses such as conference attendance, conference fees, books, software, etc.
7460	Pastor 2 Salary (gross)	Gross salary before taxes
7461	Pastor 2 housing allowance	Pastor's housing allowance
7470	Pastor 2 Matching payroll taxes	The matching portion of Social Security and Medicare that SGBC must pay if the pastor is enrolled in these federal programs.
7462	Pastor 2 Retirement Fund	Funds provided for pastor's retirement
7463	Pastor 2 Health Insurance	Cost to cover pastor's health insurance
7467	Pastor 2 Gasoline Expense	Cost of gas for pastor local travel, or travel to conferences
7468	Pastor 2 Ministry Expense	Reimbursement of pastoral ministry expenses such as conference attendance, conference fees, books, software, etc.
6400	Custodial Services & Supplies	Weekly custodial services. Supplies required for weekly custodial services, soap, toilet paper, paper towels, cleaning supplies, etc. should be charged here. <i>Note: Jobs tasked for special events beyond the contract and billed in addition to the contract should not be charged here, but to the event that required the service (i.e. Bible conference, Missions Conference, etc.). Also, equipment purchased or repaired to do custodial work should not be charged here, but to the Equipment item.</i>
6410	Landscaping services & supplies	Mowing lawn, trimming bushes, trash pick up, weed control, controlling SRP irrigation for west side. Purchase of landscaping supplies; fertilizers, herbicides, gas, etc. to be charged here. <i>Note: Items tasked beyond the contract and billed in addition to the contract should not be charged here, but to the Maintenance item.</i>
6390	Accounting Services	Cost for accounting services contract
6380	Ministry Support	Expenses such as paid child care for Wednesday evening & communion, legal consults, tax consults, etc. This is intended for people who are outside of our congregation. We do not pay people inside the congregation to serve the body.
Missions and ministries expense		
6610	Alpha Omega	Ministry Support
6365	Leightons	Missionary support
6622	Alliance Defending Freedom	Support to ADF which defends religious liberty issues
6624	ADF church alliance - legal	ADF program to provide legal assistance to churches, including SGBC.
6625	Choices Pregancy Center	Local CPC
6621	Church of the Redeemer	Supporting mission trips to indigeous pastor in southern mexico
6627	Neighborhood Clinic	Phoenix clinic for the un-insurred
6629	Skills training Program	Faith based skills training for local Phoenix community
6645	Furlough	Cost for support of missionary furloughs
Christian Ed. & ministries		
6710	Bible Conference	Expenses associated with hosting annual Bible conference; Payment of speakers, lodging and travel expenses for speakers, food expenses for pastors' luncheon, food expenses for conference breakfast and lunch. Offering taken at conference is used to defray some of these expenses.
6730	Benevolence Fund	Funds given to individuals in need. Food, medical, housing. This fund is administered by the deacons.
6720	Sunday School / Christian Ed.	Materials for use in children or adult SS classes and children's church - books, videos, consumable supplies, snacks. Books given to families with new baby. Materials for midweek or other Bible studies, VBS. Background checks for staff and volunteers. Materials for men's and women's ministries.

Act.	Item	Definition
6740	Care and Fellowship	Costs associated with church fellowship events, care situations and tributes. Such as: Food, drinks, plates, dishes, communion supplies. Flowers and cards associated with serious illness and bereavements. Flowers for new mothers. Mother's day flowers, newcomer's corsages. Tribute gifts to recognize service. Graduation gifts. Costs associated with memorial services.
6760	Youth and Teen Ministry	Costs associated with activities and ministries for the 17 and younger group. Educational materials, food, materials for projects.
Distribution of Messages & Written Materials		
7450	AV Equipment	Hardware and software to support the recording, editing and distribution of audio and video products. Hardware and software to support the AV system on the church facility. Batteries for microphones.
7455	Website costs	Labor costs for the website, hosting costs, posting document and audio updates.
7452	Sermon Audio	Costs for using sermon audio to all our messages.
Designated (Equity) Accounts		
8160	Deacon food pantry offerings	Offerings collected at Lord's Suppers for deacons to distribute to those in need.
9160	Deacon food pantry expense	Expenses to purchase food cards, etc. for those in need.
8100	Book ministry income	Funds collected from selling books for book ministry.
9100	Book ministry expense	Expenses for buying books for book ministry.

Investment Activity for 2025

Fund	12/31/24 Balance	Net Additional Investments (withdrawals)	12/31/25 Balances	Total Earnings (loss)	Return on Investment	Notes
Chase Savings	\$ 225	\$ -	\$ 224	\$ (1)		
Raymond James Money mkt.	\$ 3,027	\$ 130,000	\$ 133,081	\$ 54		1
Raymond James Investment Account	\$ 70,517	\$ -	\$ 82,876	\$ 12,359	17.53%	2
Principal Financial Group, 464 shares	\$ 35,918	\$ -	\$ 40,929	\$ 5,011	13.95%	
Totals:	\$ 109,687	\$ 130,000	\$ 257,110	\$ 17,423		

- | |
|---|
| <p>1 Current investments have a yield of aprox. 3%</p> <p>2 Return on Investment includes capital gains (loses)</p> |
|---|

Reserve balances and designations as of December 31, 2025

Account Balances					
Account	Dec. 31 2024	Dec. 31 2025	Change	Note	
Total Investments (RJ, Chase, PFG stock, MMA)	\$ 109,687	\$ 257,110	\$ 147,423	1	
Chase Checking account	\$ 87,597	\$ 103,932	\$ 16,335		
Accounts receivable from upcoming land sale to VAA	\$ 320,000	\$ 320,000	\$ -	1A	
Total:	\$ 517,284	\$ 681,042	\$ 163,758		
Designated (equity) accounts					
Designation	Dec. 31 2024	Dec. 31 2025	Change	Note	
3842 - Spanish church plant	\$189,855	\$184,876	(\$4,979)		
3843 - Class Room DEF income Reserve	\$31,183	\$0	(\$31,183)	3	
3844 - Future ministries	\$71,861	\$212,945	\$141,084		
3832 - Deacon Pantry	\$6,216	\$31,629	\$25,413	3a	
Miscellaneous designated funds - see note 4	\$7,383	\$7,383	\$0	4	
Total Designated accounts:	\$306,498	\$436,833	\$130,335		
Non Designated Funds (true reserve)					
	Dec. 31 2024	Dec. 31 2025	Change	Note	
Non designated funds true reserve	\$ 210,786	\$244,209	\$33,423		
Savings Spent during 2025 (in addition to budgeted \$'s)					
For What	Amt Appv'd	Amt Spent	Over/under	Account	Note
New ministry skills training - non recurring - see 6108	\$10,000	\$10,277	\$277	6108	2, 2a
New ministry - one time support - Guadalajara (IBRG)	\$10,000	\$10,000	0	6643	2
New ministry - one time support - 3 pastors Phillipines	\$10,000	\$10,000	0	3844	2
New Ministry - one time support to IBSTE Spain	\$15,000	\$15,000	0	3844	2
Church of the Redeemer support for 2025	\$5,000	\$5,000	0	6643	2
Proposed spending for 2026 above budgeted \$'s					
Used For	Proposed	From Acct	Note		
School house network; addl repairs for Skills program	\$6,000	3,844	This is a one time exp		
New ministry - one time support - Guadalajara (IBRG)	\$10,000	3,844			
New ministry - one time support - three pastors Phillipi	\$10,000	3,844			

Notes

1 - See the Investments page.

1A - The NE 1.3 acres of bare land is in Escrow to be sold to VAA. We are anticipating the sale in Jan-Feb of 2026. This 320,000 is not presently in SGBCs accounts. It's reported here to accurately represent SGBCs financial condition.

2 - These amounts were approved at the June 1 congregational meeting on new ministries to support.

2a - See account 6108 for details on expenditures

3 - We are recommending that the unused classroom reserve funds (3843) be moved to future ministries. 3843 account s/b deleted.

3a - The 31629 balance seem way high - currently in review.

4 - The misc designated accounts are: 3820 Media Ministry \$426.17, 3833 Youth teen ministry \$790.84, 3837 Care commission \$110, 3838 Mission Love Offering \$3,124, 3845 Furlough Funds \$2931.65

Assets and Liabilities as of December 31, 2025

Assets

Assets	2025			Notes
Investments	\$ 257,110	\$ -	\$ -	
Main Parcel = 286,136ft (152-16-002D)	\$ 7,681,971	\$ -	\$ -	1,2
NW Vacant Land = 91,039ft (152-16-002C)	\$ 521,779	\$ -	\$ -	1,2
NE Public parcel = 5,756ft (152-16-179A)	\$ 60,300	\$ -	\$ -	1,2
Chase checking account	\$ 103,932	\$ -	\$ -	
Total:	\$ 8,625,092	\$ -		

Liabilities

Liabilities	2025			Notes
VAA Deposit	\$16,310	\$0	\$0	
Sales taxes owed	\$1,339	\$0	\$0	
Sales taxes owed	\$1,339	\$0	\$0	
Total:	\$18,988	\$0	\$0	
Networth:	\$8,606,104	\$0	\$0	

Notes

- 1 Property value based on Maricopa County Assessor Full Cash Value, 2024.
- 2 This valuation does not include equipment and furnishings

Pastors' Salary Computation (2026)

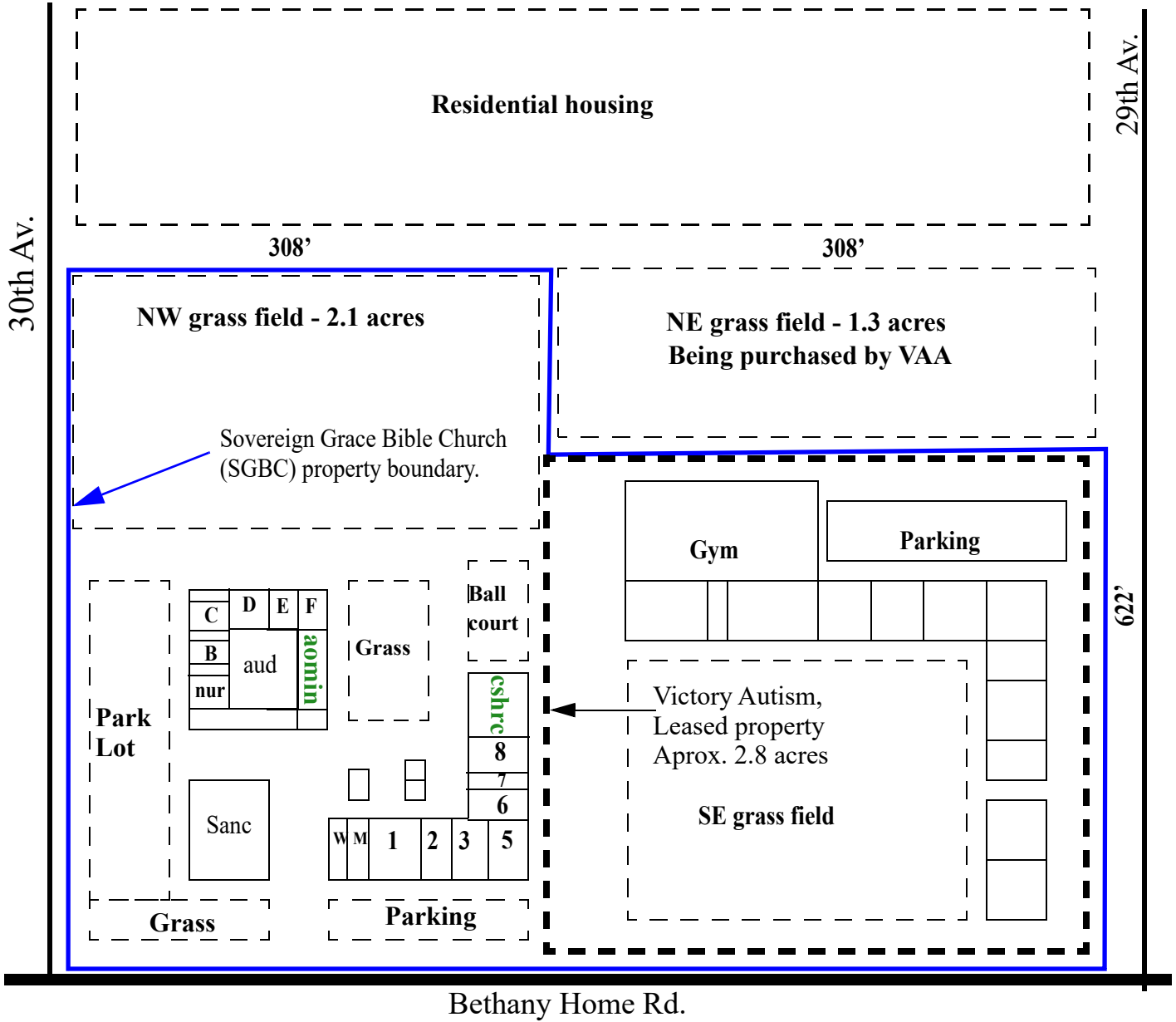
Pastor #1 - Dan basic salary	\$ 48,668	Housing allowance and retirement are additional
Dental coverage (Dan)	\$ 50	Monthly
Vision (Dan)	\$ 25	Monthly
Dental and vision supplement total	\$ 900	Annual Dental & Vision compensation
15% of supplement total	\$ 135	Gross Up to cover 15% additional income tax.
Salary adjustment for Dental & Vision	\$ 1,035	Total annual adjustment to Base Salary
Salary adjustment for Health Insurance	\$ 12,776	Annual - see note 1 below.
15% of health insurance total	\$ 1,916	Gross Up to cover 15% additional income tax.
6310 - Pastor Dan salary	\$ 64,395	Base salary plus medical adjustments Housing, retirement, gasoline & ministry expense are additional
6330 - Housing Allowance	\$ 12,000	
6340 - Retirement Allowance	\$ 2,000	
6365 - Gas Allowance	\$ 900	
6460 - Ministry Expense	\$ 2,000	
Total employee package:	\$ 81,295	
6320 - Payroll Taxes (Employer)	\$ 4,926	
6350 - Group Health Insurance	\$ -	Employee covered by Medicare, see reimbursement above.
6325 - Workers Comp Insurance (1/2)	\$ 650	
Employer cost:	\$ 86,871	

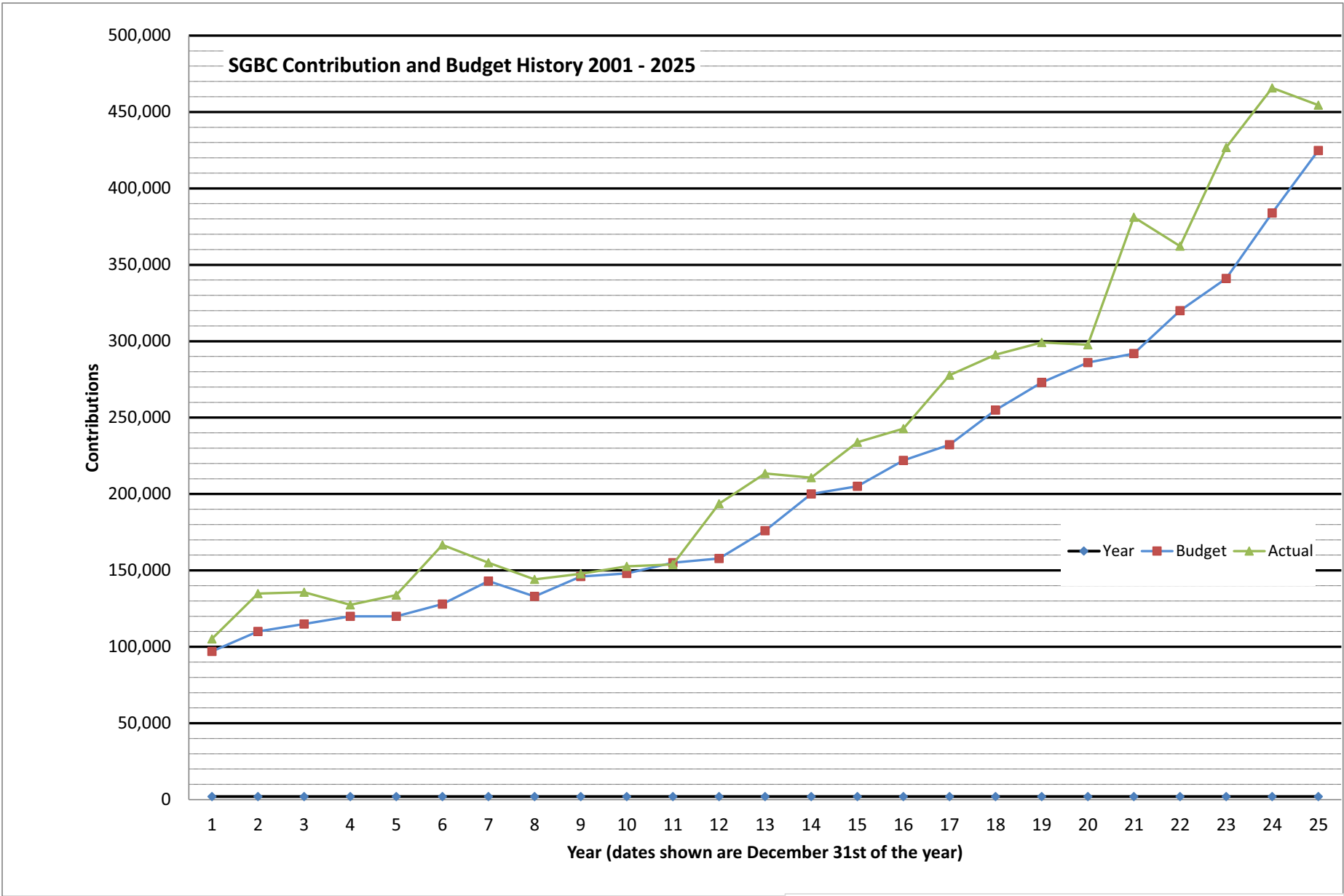
Pastor #2 - Nathaniel basic salary	\$ 69,251	Housing allowance and retirement are additional
Dental coverage (family)	\$ -	Covered under medical insurance from Mabel's employer
Vision (family)	\$ -	Covered under medical insurance from Mabel's employer
Medical insurance premiums	\$ 354	This is the portion paid to Mabel's employer for insurance
Med, Dental and vision supplement total	\$ 4,251	Annual Med., Dental & Vision compensation
15% of supplement total	\$ 638	Gross Up to cover 15% additional income tax.
Salary adjustment for med/dental sup	\$ 4,889	Annual
7460 - Pastor Nathaniel salary	\$ 74,140	Base salary plus medical adjustment Housing, retirement, gasoline & ministry expense are additional
7461 - Housing Allowance	\$ 20,400	Raised by 5,400, subtracted from basic salary.
7462 - Retirement Allowance	\$ 2,000	
7467 - Gas Allowance	\$ 900	
7468 - Ministry Expense	\$ 2,000	
Total employee package:	\$ 99,440	
7470 - Payroll Taxes (Employer)	\$ -	Employee opted out of Social Security
7463 - Group Health Insurance	\$ -	Employee covered by Spouse's plan
6325 - Workers Comp Insurance (1/2)	\$ 650	
Employer cost:	\$ 100,090	

Note 1 - breakdown of medical costs for pastor Dan

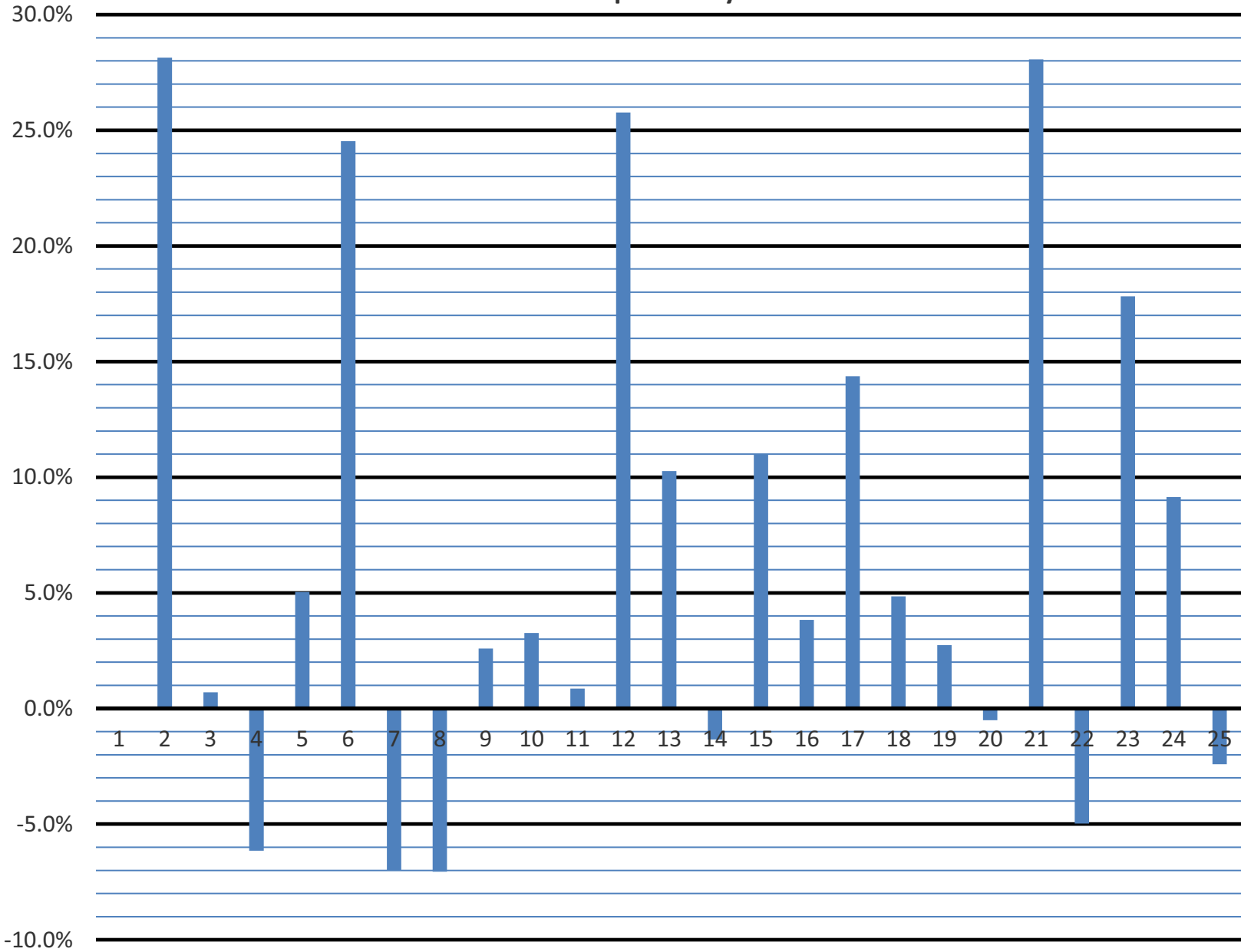
Basic Medicare:	\$202.90
Medicare Part B IRMMA:	\$446.30
Medicare Part D (Rx) IRMMA:	\$83.30
Blue Cross Blue Sheild Medicare supplement:	\$234.69
United care Rx plan:	\$97.50
	\$1,064.69 Monthly
	\$12,776.28 Yearly

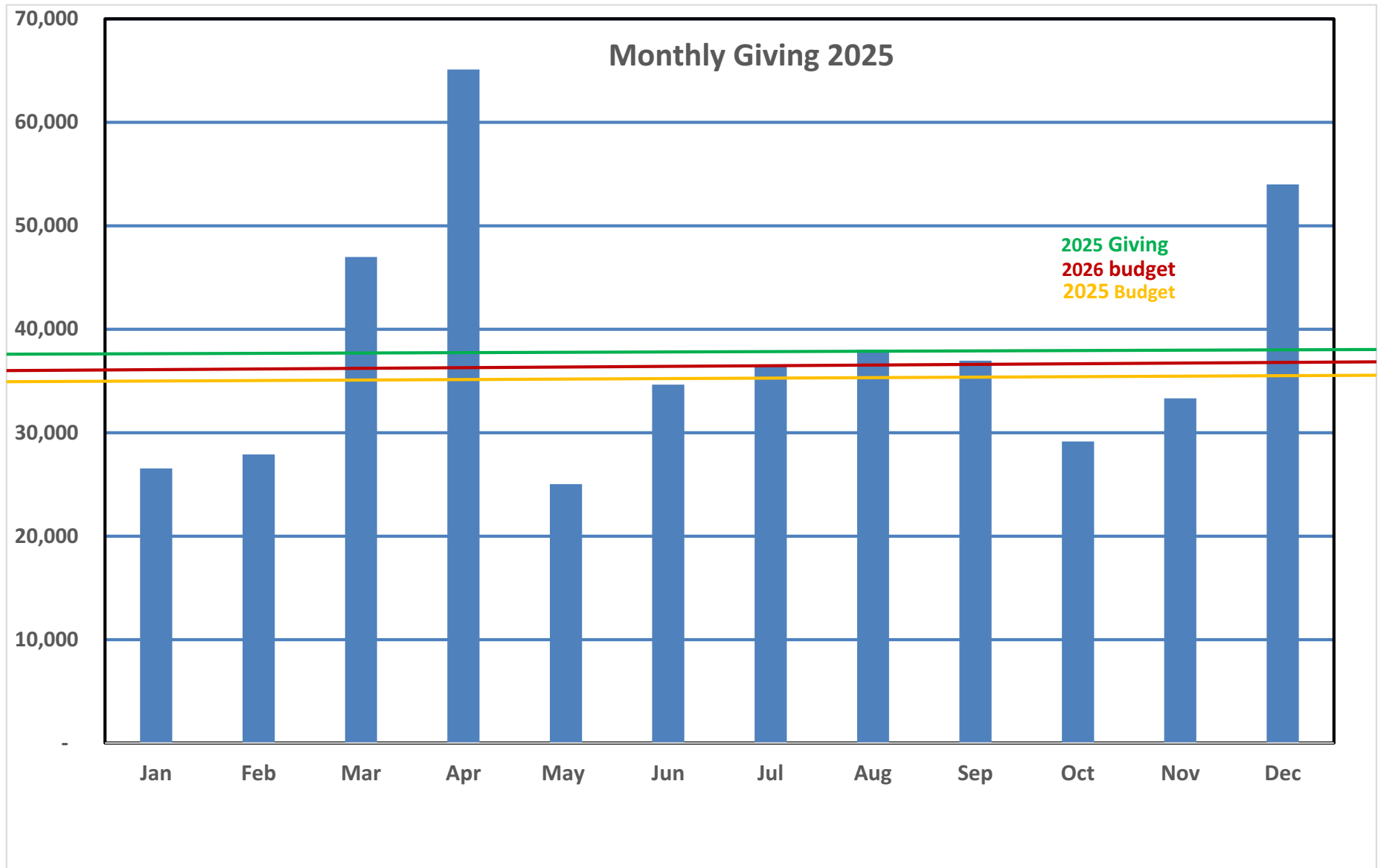
Sovereign Grace Bible Church - Site Plan





Contribution increase or decrease from previous year 2001 - 2025





Distribution of SGBC 2025 Budgeted Income

